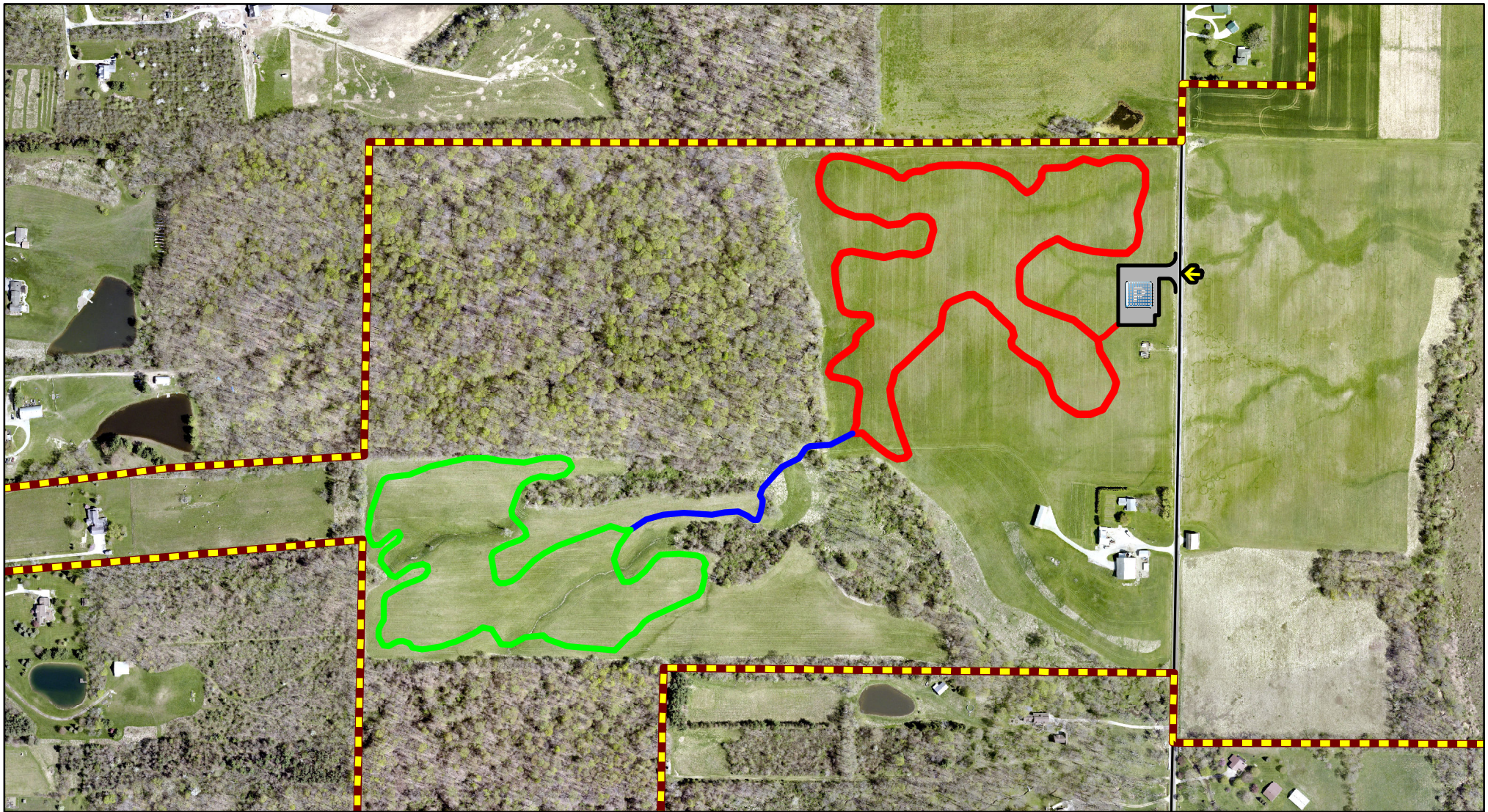










# Medina County Park District

Chippewa Lake Birding and Bridle Trail -- Site #13  
7782 Ballash Rd., Medina, OH 44256



 Park Boundary  
 Loop #1


 Loop #2  
 Connector

 Centerlines  
 Entrance

 Parking



Information derived from Medina County GIS data, Medina County parcel records, Medina County Park District records, and 2020 Medina County Orthophotography; NAD 1983 HARN State Plane Ohio North; Projection: Lambert Conformal Conic, Created by: Donna J. Schrader  
Medina County Park District -- 03/18/2025

1 inch = 500 feet  
 Feet  
0 125 250 500